

anti- ACE2 antibody

Product Information

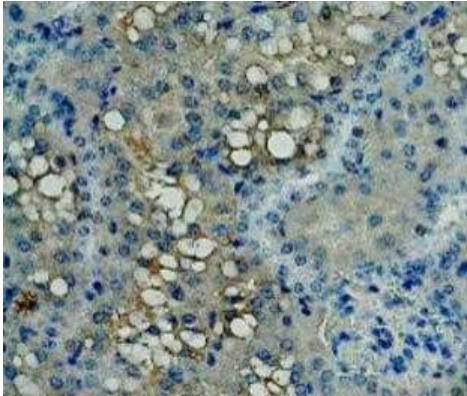
Catalog No.:	BS-18000BANF
Size:	100µg
Form:	liquid
Purification:	Immunogen affinity purified
Purity:	≥95% as determined by SDS-PAGE
Host:	Rabbit
Clonality:	polyclonal
IsoType:	IgG
Storage:	PBS with 0.02% sodium azide and 50% glycerol pH 7.3 , -20°C for 12 months (Avoid repeated freeze / thaw cycles.)

Immunogen information

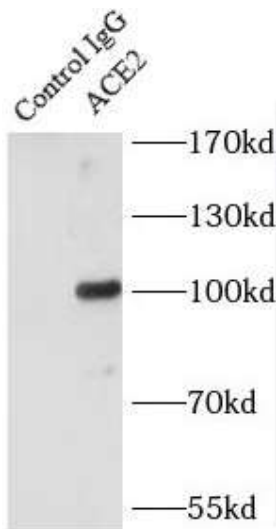
Immunogen:	angiotensin I converting enzyme(peptidyl-dipeptidase A) 2
Synonyms:	ACE related carboxypeptidase, ACE2, ACEH, Angiotensin converting enzyme 2, DKFZp434A014, Metalloprotease MPROT15
Observed MW:	92 kDa
Uniprot ID :	Q9BYF1

Application

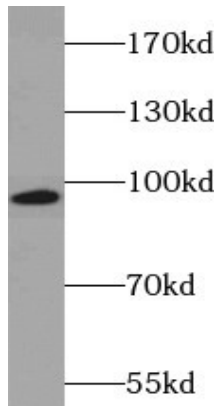
Reactivity:	Human, Mouse, Rat
Tested Application:	ELISA, WB, IHC, IP
Recommended dilution:	WB: 1:500-1:2000; IP: 1:500-1:2000; IHC: 1:500-1:2000
Image:	



Immunohistochemical analysis of paraffin-embedded human kidney tissue slide using BS-18000BANF (ACE2 antibody) at dilution of 1:1000



IP Result of anti-ACE2 (IP:BS-18000BANF, 5ug; Detection:BS-18000BANF 1:1000) with mouse kidney tissue lysate 4000ug.



mouse kidney tissue were subjected to SDS PAGE followed by western blot with BS-18000BANF(ACE2 antibody) at dilution of 1:1000